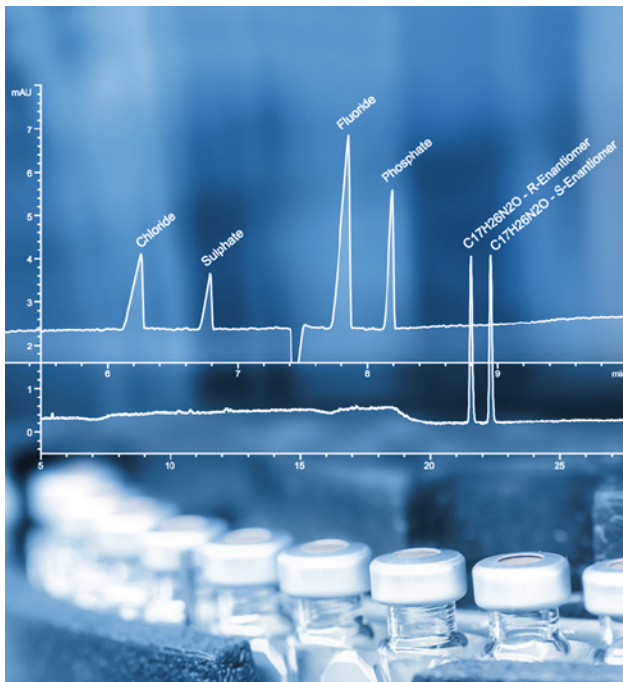


Know what's inside.



Capillary Electrophoresis-CE

- Anions and Cations
- Peptides and Proteins
- Amino Acids
- Organic Acids

provided by Phytos, LAT, and LPU

Experts for Analytical Solutions



Phytos



LPU

Our Services

- Orthogonal method to the LC for even UV inactive substances
- Separation of analytes critical in IC, LC, and GC
- Identity, assay, and related substances
- Enantiomeric purity
- Degree of polymerization in raw materials and finished products
- Batch control, method development, and validation

If you are interested in our services, please contact:

Dr. Andreas Hofmann	+49 731 97439-13	info@phytos.de
Elisabeth Obermeier	+49 89 858967-112	kontakt@lat-gmbh.de
Stefan Woidich	+49 731 97439-59	bd@lpu-labor.com

Further information about our service portfolio can be found at www.gba-group.de

Phytos

Labor für Analytik von Arzneimitteln GmbH & Co. KG
Leibnizstrasse 9, 89231 Neu-Ulm, Germany

LAT GmbH

Institut für Pharma-Analytik
Am Haag 4, 82166 Gräfelfing, Germany

LPU

Labor für Pharma- und Umweltanalytik GmbH
Fraunhoferstrasse 11a, 82152 Martinsried, Germany